

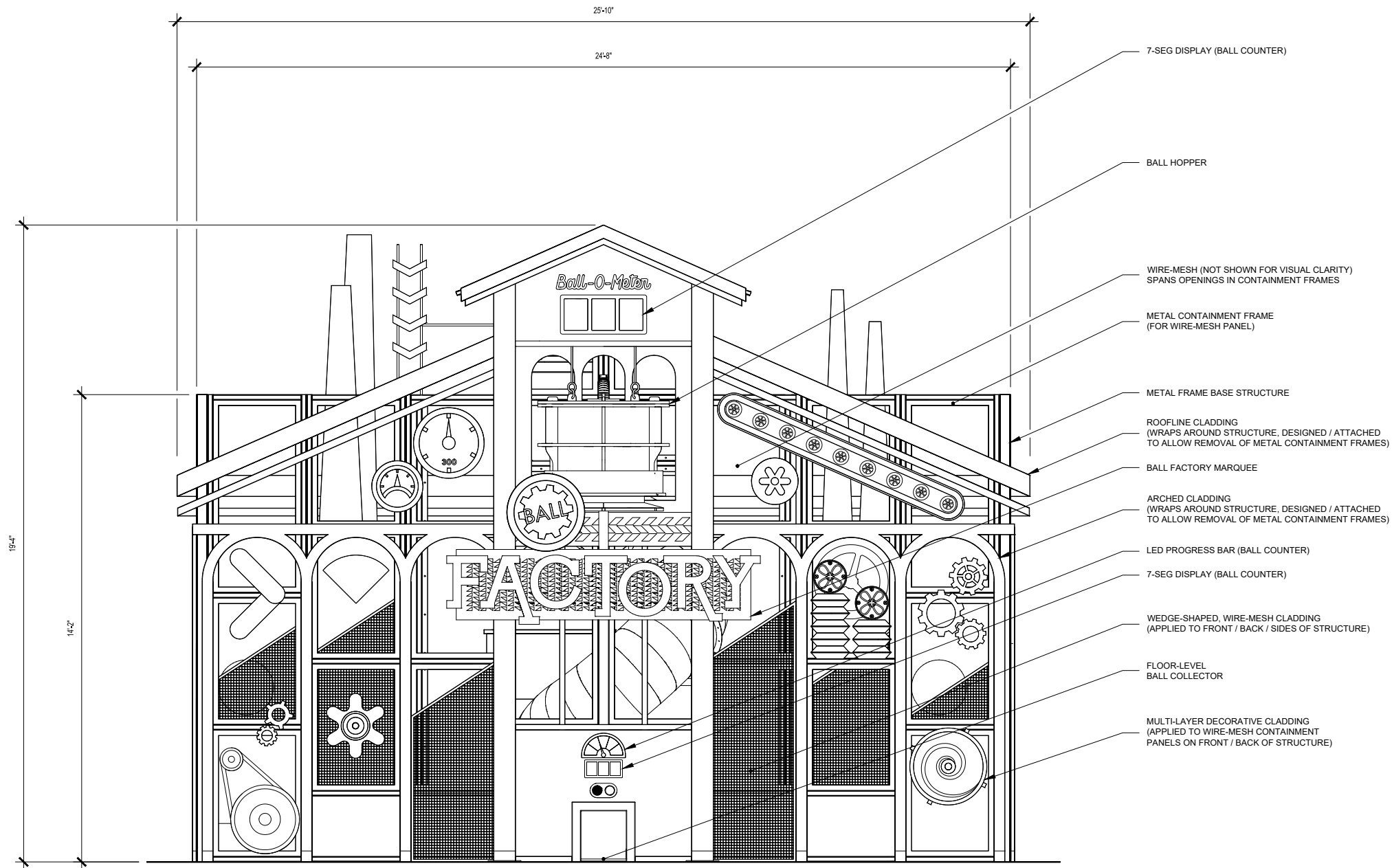
## TOP VIEW

SCALE: 1/4" = 1'-0"

## FACTORY CLIMBER

### NOTES:

1. EASED EDGES. NO SHARP CORNERS.
2. UNLESS OTHERWISE SPECIFIED, CLIMBING STRUCTURE IS PAINTED METAL; THEMATIC CLADDING IS PAINTED WOOD.
3. FOR VISUAL CLARITY, DRAWING DOES NOT SHOW THE VARIOUS BALL RUNS FEEDING THE HOPPER FROM OTHER INTERACTIVES.
4. ALL VISIBLE HARDWARE TO FACE CLIMBER INTERIOR AS TO MAINTAIN UNOBSTRUCTED, CLEAN LINES ON CLIMBER EXTERIOR.
5. ALL HARDWARE AND/OR FABRICATED ELEMENTS ACCESSIBLE TO GUESTS WITHIN THE CLIMBER INTERIOR MUST ABIDE BY ASTM GUIDELINES FOR PROTRUSIONS, ETC. FOR SOFT CONTAINED PLAY.
6. CLIMBING STRUCTURE ATTACHES TO METAL PLATE INSTALLED WITHIN FACILITY FLOOR. ATTACHMENT DETAIL TBD BY FABRICATOR.
7. SEE PROVIDED 3D MODEL FOR ADDITIONAL DETAILS AND DIMENSIONS.



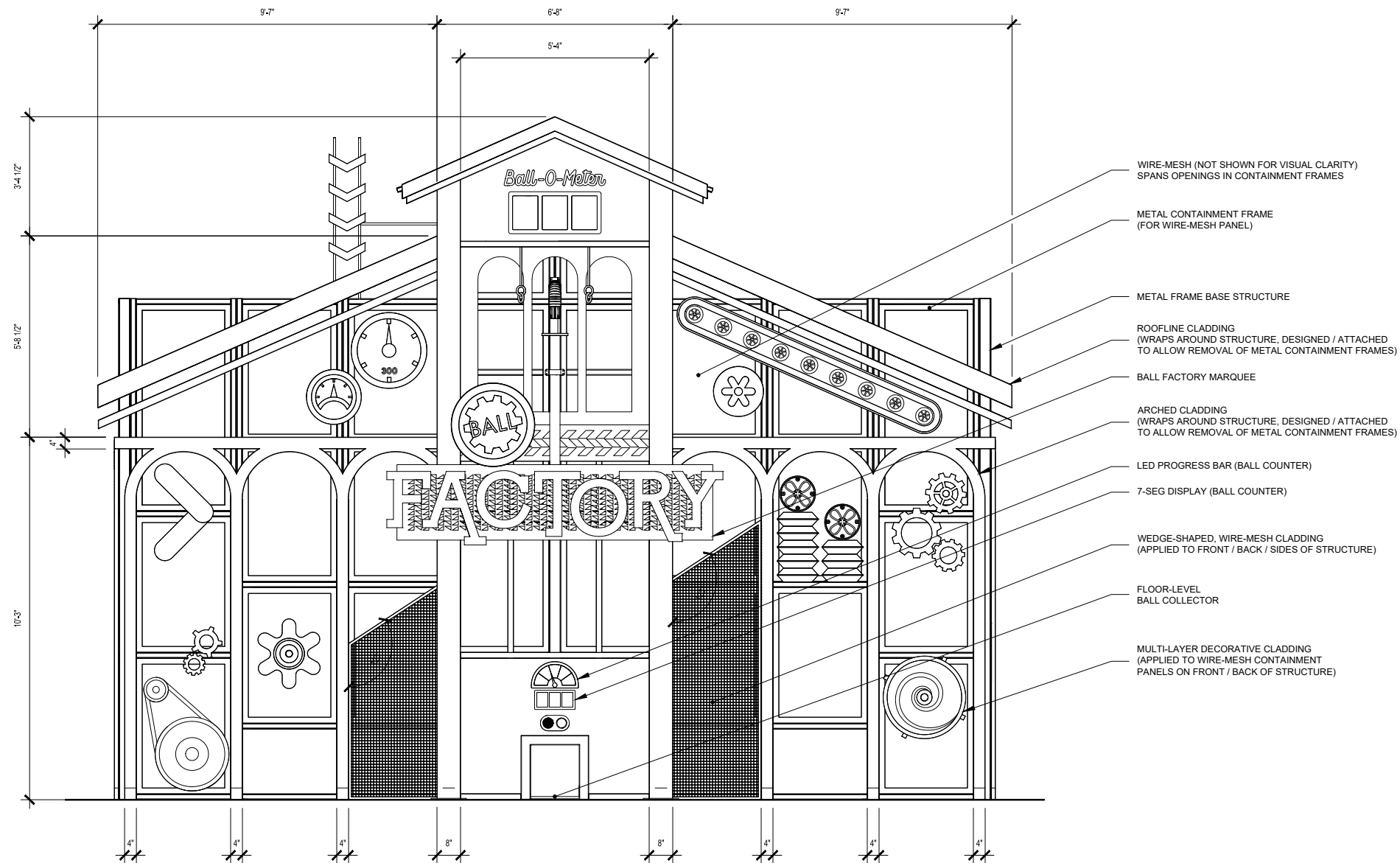
## FRONT VIEW

SCALE: 1/4" = 1'-0"

## FACTORY CLIMBER

### NOTES:

1. EASED EDGES. NO SHARP CORNERS.
2. UNLESS OTHERWISE SPECIFIED, CLIMBING STRUCTURE IS PAINTED METAL; THEMATIC CLADDING IS PAINTED WOOD.
3. FOR VISUAL CLARITY, THE FOLLOWING ELEMENTS ARE NOT SHOWN:
  - BALL RUNS FEEDING THE HOPPER FROM OTHER FACTORY INTERACTIVES
  - METAL MESH PANELS HOUSED WITHIN THE CONTAINMENT FRAMES
4. ALL VISIBLE HARDWARE TO FACE CLIMBER INTERIOR AS TO MAINTAIN UNOBSTRUCTED, CLEAN LINES ON CLIMBER EXTERIOR.
5. ALL HARDWARE AND/OR FABRICATED ELEMENTS ACCESSIBLE TO GUESTS WITHIN THE CLIMBER INTERIOR MUST ABIDE BY ASTM GUIDELINES FOR PROTRUSIONS, ETC. FOR SOFT CONTAINED PLAY.
6. CLIMBING STRUCTURE ATTACHES TO METAL PLATE INSTALLED WITHIN FACILITY FLOOR. ATTACHMENT DETAIL TBD BY FABRICATOR.
7. SEE GRAPHICS PACKAGE FOR SPECIFICS REGARDING INDIVIDUAL CLADDING ELEMENTS (DIMENSIONS, LAYER COMPOSITION, ETC.).
8. SEE PROVIDED 3D MODEL FOR ADDITIONAL DETAILS AND DIMENSIONS.



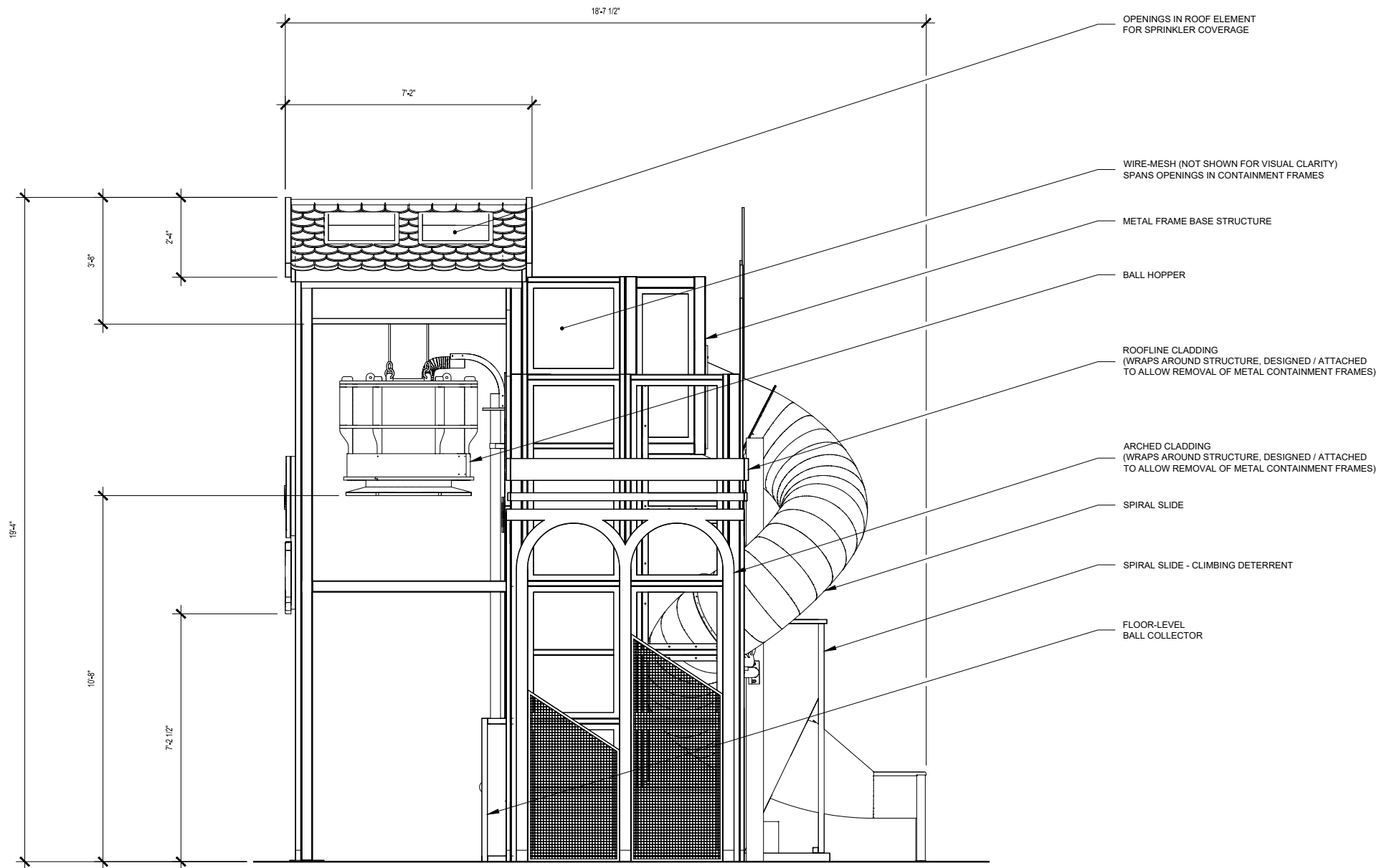
## FRONT VIEW (ISOLATED)

SCALE: 1/4" = 1'-0"

## FACTORY CLIMBER

### NOTES:

1. EASED EDGES. NO SHARP CORNERS.
2. UNLESS OTHERWISE SPECIFIED, CLIMBING STRUCTURE IS PAINTED METAL; THEMATIC CLADDING IS PAINTED WOOD.
3. FOR VISUAL CLARITY, THE FOLLOWING ELEMENTS ARE NOT SHOWN:
  - BALL RUNS FEEDING THE HOPPER FROM OTHER FACTORY INTERACTIVES
  - METAL MESH PANELS HOUSED WITHIN THE CONTAINMENT FRAMES
4. ALL VISIBLE HARDWARE TO FACE CLIMBER INTERIOR AS TO MAINTAIN UNOBSTRUCTED, CLEAN LINES ON CLIMBER EXTERIOR.
5. ALL HARDWARE AND/OR FABRICATED ELEMENTS ACCESSIBLE TO GUESTS WITHIN THE CLIMBER INTERIOR MUST ABIDE BY ASTM GUIDELINES FOR PROTRUSIONS, ETC. FOR SOFT CONTAINED PLAY.
6. CLIMBING STRUCTURE ATTACHES TO METAL PLATE INSTALLED WITHIN FACILITY FLOOR. ATTACHMENT DETAIL TBD BY FABRICATOR.
7. SEE GRAPHICS PACKAGE FOR SPECIFICS REGARDING INDIVIDUAL CLADDING ELEMENTS (DIMENSIONS, LAYER COMPOSITION, ETC.).
8. SEE PROVIDED 3D MODEL FOR ADDITIONAL DETAILS AND DIMENSIONS.



## RIGHT VIEW

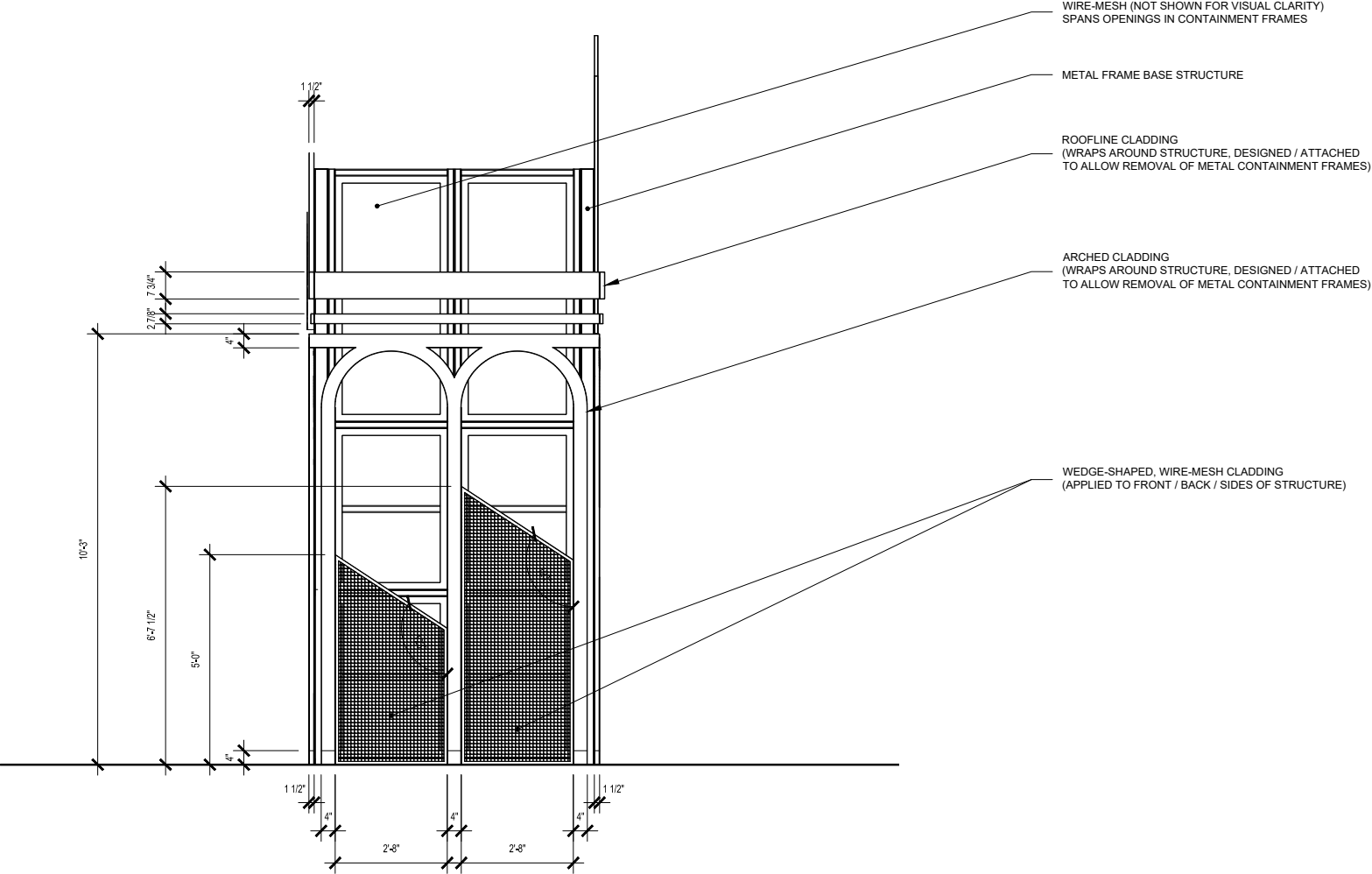
SCALE: 1/4" = 1'-0"

## FACTORY CLIMBER

### NOTES:

1. EASED EDGES. NO SHARP CORNERS.
2. UNLESS OTHERWISE SPECIFIED, CLIMBING STRUCTURE IS PAINTED METAL; THEMATIC CLADDING IS PAINTED WOOD.
3. FOR VISUAL CLARITY, THE FOLLOWING ELEMENTS ARE NOT SHOWN:
  - BALL RUNS FEEDING THE HOPPER FROM OTHER FACTORY INTERACTIVES
  - METAL MESH PANELS HOUSED WITHIN THE CONTAINMENT FRAMES
4. ALL VISIBLE HARDWARE TO FACE CLIMBER INTERIOR AS TO MAINTAIN UNOBSTRUCTED, CLEAN LINES ON CLIMBER EXTERIOR.
5. ALL HARDWARE AND/OR FABRICATED ELEMENTS ACCESSIBLE TO GUESTS WITHIN THE CLIMBER INTERIOR MUST ABIDE BY ASTM GUIDELINES FOR PROTRUSIONS, ETC. FOR SOFT CONTAINED PLAY.
6. CLIMBING STRUCTURE ATTACHES TO METAL PLATE INSTALLED WITHIN FACILITY FLOOR. ATTACHMENT DETAIL TBD BY FABRICATOR.
7. SEE GRAPHICS PACKAGE FOR SPECIFICS REGARDING INDIVIDUAL CLADDING ELEMENTS (DIMENSIONS, LAYER COMPOSITION, ETC.).
8. SEE PROVIDED 3D MODEL FOR ADDITIONAL DETAILS AND DIMENSIONS.





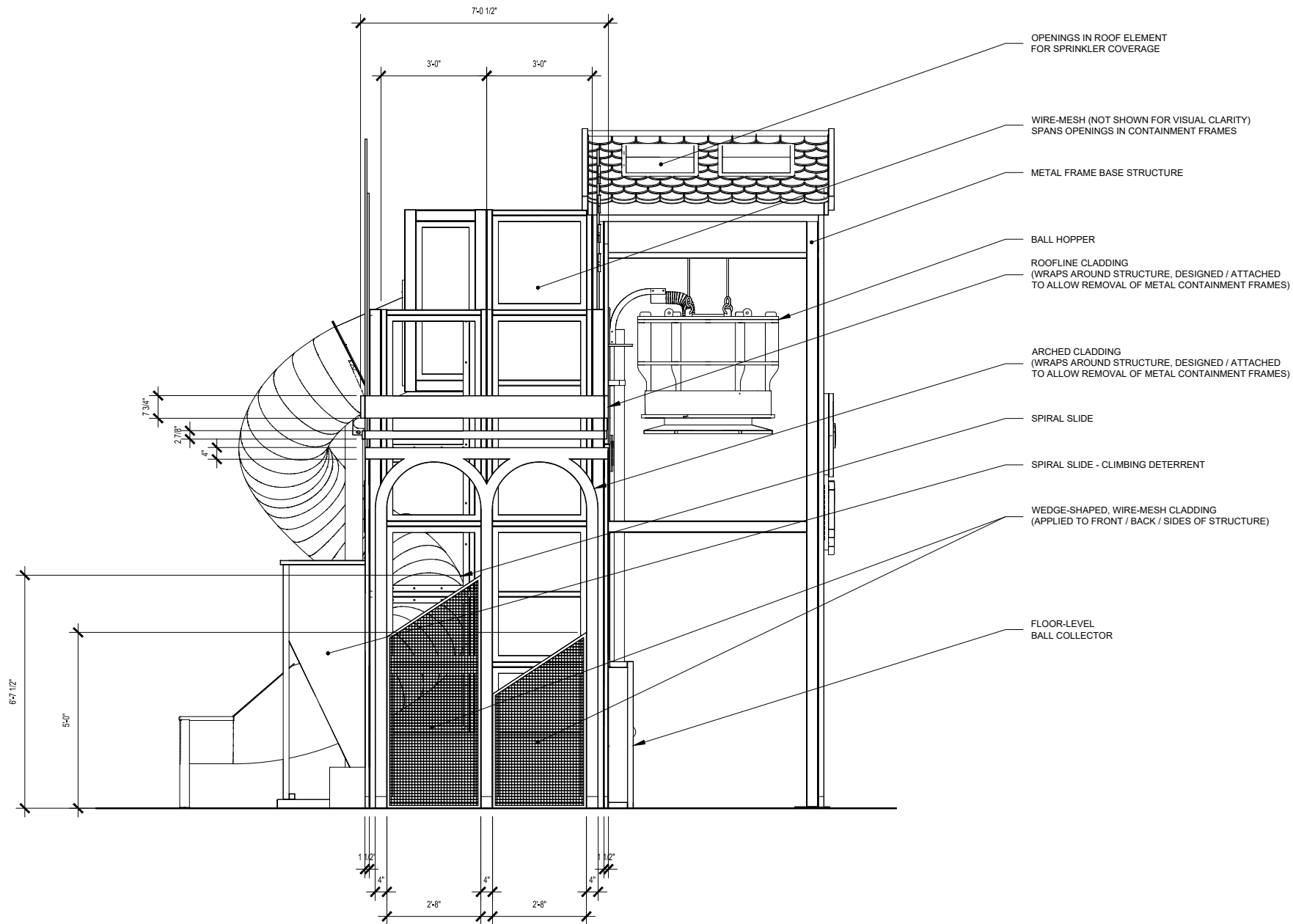
RIGHT VIEW (ISOLATED)

FACTORY CLIMBER

SCALE: 1/4" = 1'-0"

NOTES:

1. EASED EDGES. NO SHARP CORNERS.
2. UNLESS OTHERWISE SPECIFIED, CLIMBING STRUCTURE IS PAINTED METAL; THEMATIC CLADDING IS PAINTED WOOD.
3. FOR VISUAL CLARITY, THE FOLLOWING ELEMENTS ARE NOT SHOWN:
  - BALL RUNS FEEDING THE HOPPER FROM OTHER FACTORY INTERACTIVES
  - METAL MESH PANELS HOUSED WITHIN THE CONTAINMENT FRAMES
4. ALL VISIBLE HARDWARE TO FACE CLIMBER INTERIOR AS TO MAINTAIN UNOBSTRUCTED, CLEAN LINES ON CLIMBER EXTERIOR.
5. ALL HARDWARE AND/OR FABRICATED ELEMENTS ACCESSIBLE TO GUESTS WITHIN THE CLIMBER INTERIOR MUST ABIDE BY ASTM GUIDELINES FOR PROTRUSIONS, ETC. FOR SOFT CONTAINED PLAY.
6. CLIMBING STRUCTURE ATTACHES TO METAL PLATE INSTALLED WITHIN FACILITY FLOOR. ATTACHMENT DETAIL TBD BY FABRICATOR.
7. SEE GRAPHICS PACKAGE FOR SPECIFICS REGARDING INDIVIDUAL CLADDING ELEMENTS (DIMENSIONS, LAYER COMPOSITION, ETC.).
8. SEE PROVIDED 3D MODEL FOR ADDITIONAL DETAILS AND DIMENSIONS.

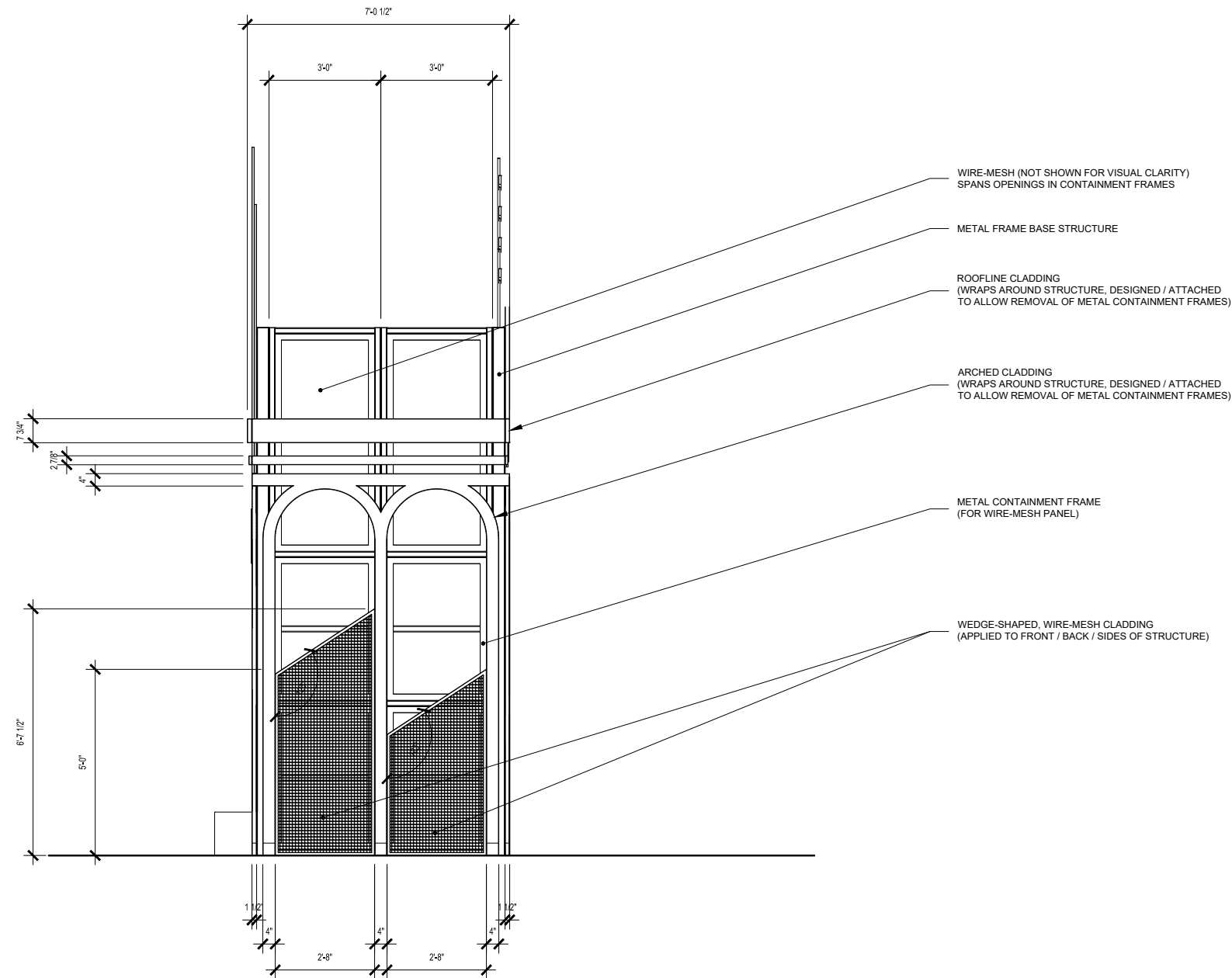


LEFT VIEW

FACTORY CLIMBER

SCALE: 1/4" = 1'-0"

- NOTES:**
1. EASED EDGES. NO SHARP CORNERS.
  2. UNLESS OTHERWISE SPECIFIED, CLIMBING STRUCTURE IS PAINTED METAL; THEMATIC CLADDING IS PAINTED WOOD.
  3. FOR VISUAL CLARITY, THE FOLLOWING ELEMENTS ARE NOT SHOWN:
    - BALL RUNS FEEDING THE HOPPER FROM OTHER FACTORY INTERACTIVES
    - METAL MESH PANELS HOUSED WITHIN THE CONTAINMENT FRAMES
  4. ALL VISIBLE HARDWARE TO FACE CLIMBER INTERIOR AS TO MAINTAIN UNOBSTRUCTED, CLEAN LINES ON CLIMBER EXTERIOR.
  5. ALL HARDWARE AND/OR FABRICATED ELEMENTS ACCESSIBLE TO GUESTS WITHIN THE CLIMBER INTERIOR MUST ABIDE BY ASTM GUIDELINES FOR PROTRUSIONS, ETC. FOR SOFT CONTAINED PLAY.
  6. CLIMBING STRUCTURE ATTACHES TO METAL PLATE INSTALLED WITHIN FACILITY FLOOR. ATTACHMENT DETAIL TBD BY FABRICATOR.
  7. SEE GRAPHICS PACKAGE FOR SPECIFICS REGARDING INDIVIDUAL CLADDING ELEMENTS (DIMENSIONS, LAYER COMPOSITION, ETC.).
  8. SEE PROVIDED 3D MODEL FOR ADDITIONAL DETAILS AND DIMENSIONS.



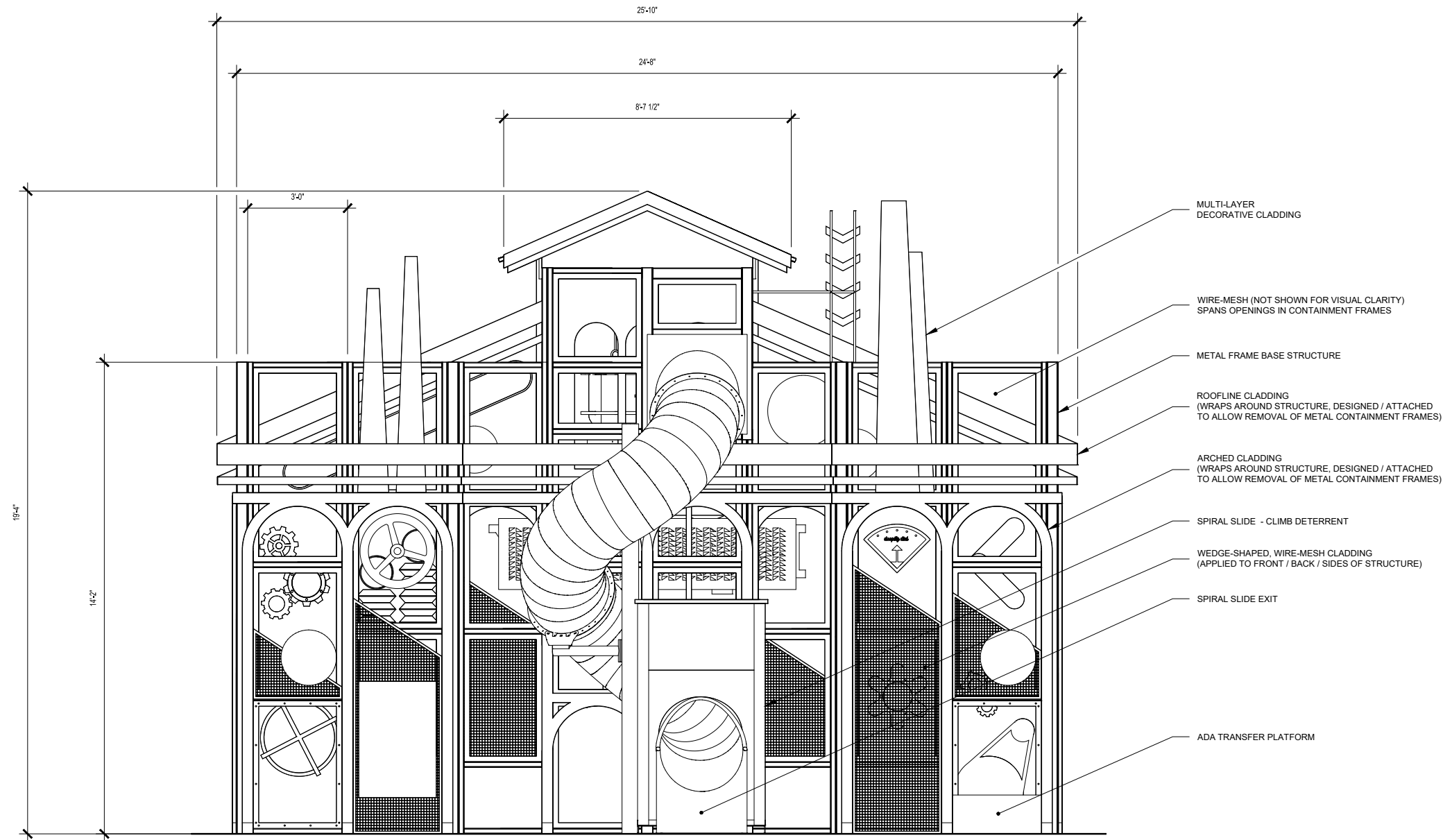
LEFT VIEW (ISOLATED)

FACTORY CLIMBER

SCALE: 1/4" = 1'-0"

**NOTES:**

1. EASED EDGES. NO SHARP CORNERS.
2. UNLESS OTHERWISE SPECIFIED, CLIMBING STRUCTURE IS PAINTED METAL; THEMATIC CLADDING IS PAINTED WOOD.
3. FOR VISUAL CLARITY, THE FOLLOWING ELEMENTS ARE NOT SHOWN:
  - BALL RUNS FEEDING THE HOPPER FROM OTHER FACTORY INTERACTIVES
  - METAL MESH PANELS HOUSED WITHIN THE CONTAINMENT FRAMES
4. ALL VISIBLE HARDWARE TO FACE CLIMBER INTERIOR AS TO MAINTAIN UNOBSTRUCTED, CLEAN LINES ON CLIMBER EXTERIOR.
5. ALL HARDWARE AND/OR FABRICATED ELEMENTS ACCESSIBLE TO GUESTS WITHIN THE CLIMBER INTERIOR MUST ABIDE BY ASTM GUIDELINES FOR PROTRUSIONS, ETC. FOR SOFT CONTAINED PLAY.
6. CLIMBING STRUCTURE ATTACHES TO METAL PLATE INSTALLED WITHIN FACILITY FLOOR. ATTACHMENT DETAIL TBD BY FABRICATOR.
7. SEE GRAPHICS PACKAGE FOR SPECIFICS REGARDING INDIVIDUAL CLADDING ELEMENTS (DIMENSIONS, LAYER COMPOSITION, ETC.).
8. SEE PROVIDED 3D MODEL FOR ADDITIONAL DETAILS AND DIMENSIONS.



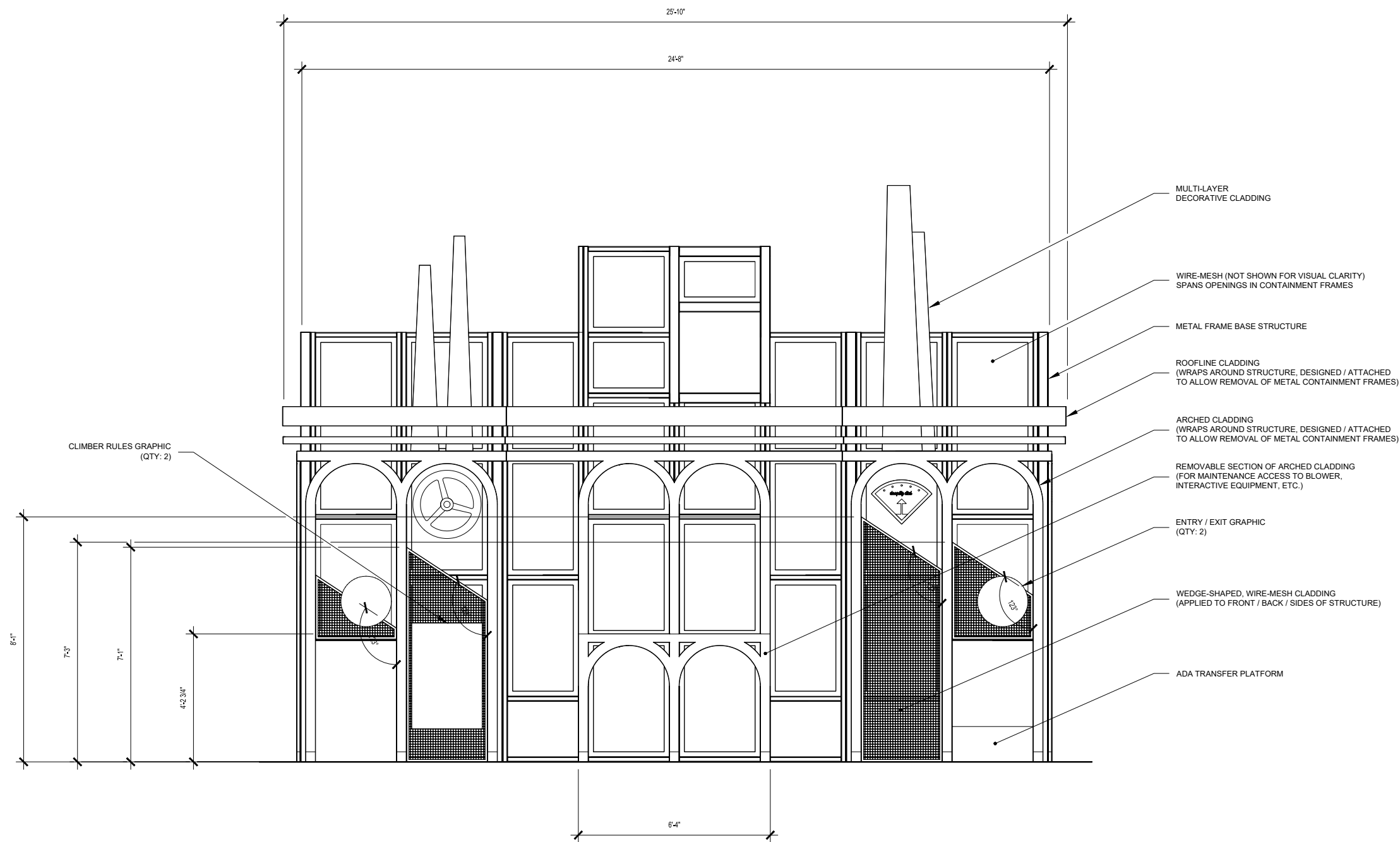
## BACK VIEW

SCALE: 1/4" = 1'-0"

## FACTORY CLIMBER

### NOTES:

1. EASED EDGES. NO SHARP CORNERS.
2. UNLESS OTHERWISE SPECIFIED, CLIMBING STRUCTURE IS PAINTED METAL; THEMATIC CLADDING IS PAINTED WOOD.
3. FOR VISUAL CLARITY, THE FOLLOWING ELEMENTS ARE NOT SHOWN:
  - BALL RUNS FEEDING THE HOPPER FROM OTHER FACTORY INTERACTIVES
  - METAL MESH PANELS HOUSED WITHIN THE CONTAINMENT FRAMES
4. ALL VISIBLE HARDWARE TO FACE CLIMBER INTERIOR AS TO MAINTAIN UNOBSTRUCTED, CLEAN LINES ON CLIMBER EXTERIOR.
5. ALL HARDWARE AND/OR FABRICATED ELEMENTS ACCESSIBLE TO GUESTS WITHIN THE CLIMBER INTERIOR MUST ABIDE BY ASTM GUIDELINES FOR PROTRUSIONS, ETC. FOR SOFT CONTAINED PLAY.
6. CLIMBING STRUCTURE ATTACHES TO METAL PLATE INSTALLED WITHIN FACILITY FLOOR. ATTACHMENT DETAIL TBD BY FABRICATOR.
7. SEE GRAPHICS PACKAGE FOR SPECIFICS REGARDING INDIVIDUAL CLADDING ELEMENTS (DIMENSIONS, LAYER COMPOSITION, ETC.).
8. SEE PROVIDED 3D MODEL FOR ADDITIONAL DETAILS AND DIMENSIONS.



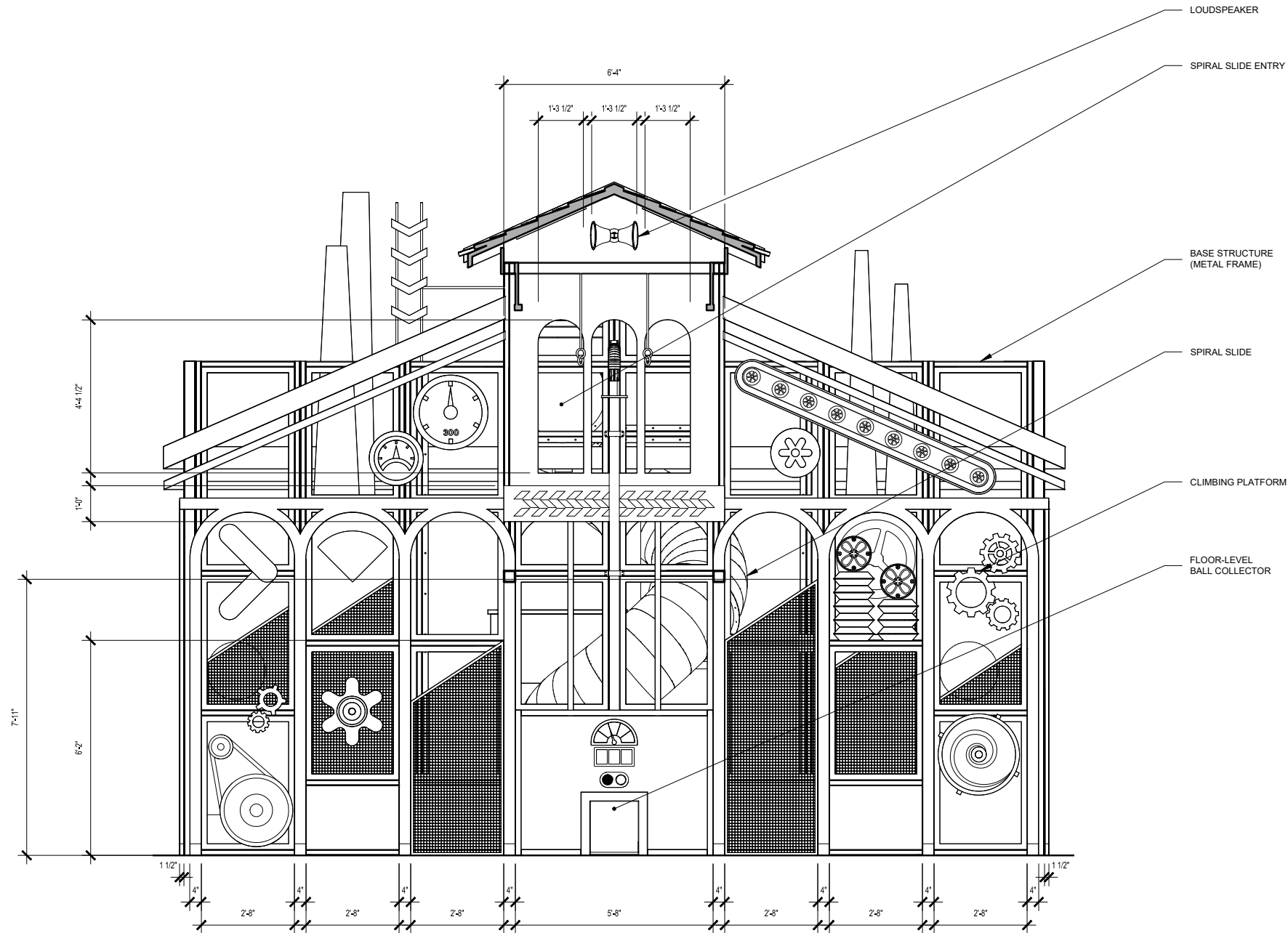
## BACK VIEW (ISOLATED - SLIDE REMOVED)

SCALE: 1/4" = 1'-0"

## FACTORY CLIMBER

### NOTES:

1. EASED EDGES. NO SHARP CORNERS.
2. UNLESS OTHERWISE SPECIFIED, CLIMBING STRUCTURE IS PAINTED METAL; THEMATIC CLADDING IS PAINTED WOOD.
3. FOR VISUAL CLARITY, THE FOLLOWING ELEMENTS ARE NOT SHOWN:
  - BALL RUNS FEEDING THE HOPPER FROM OTHER FACTORY INTERACTIVES
  - METAL MESH PANELS HOUSED WITHIN THE CONTAINMENT FRAMES
4. ALL VISIBLE HARDWARE TO FACE CLIMBER INTERIOR AS TO MAINTAIN UNOBSTRUCTED, CLEAN LINES ON CLIMBER EXTERIOR.
5. ALL HARDWARE AND/OR FABRICATED ELEMENTS ACCESSIBLE TO GUESTS WITHIN THE CLIMBER INTERIOR MUST ABIDE BY ASTM GUIDELINES FOR PROTRUSIONS, ETC. FOR SOFT CONTAINED PLAY.
6. CLIMBING STRUCTURE ATTACHES TO METAL PLATE INSTALLED WITHIN FACILITY FLOOR. ATTACHMENT DETAIL TBD BY FABRICATOR.
7. SEE GRAPHICS PACKAGE FOR SPECIFICS REGARDING INDIVIDUAL CLADDING ELEMENTS (DIMENSIONS, LAYER COMPOSITION, ETC.).
8. SEE PROVIDED 3D MODEL FOR ADDITIONAL DETAILS AND DIMENSIONS.



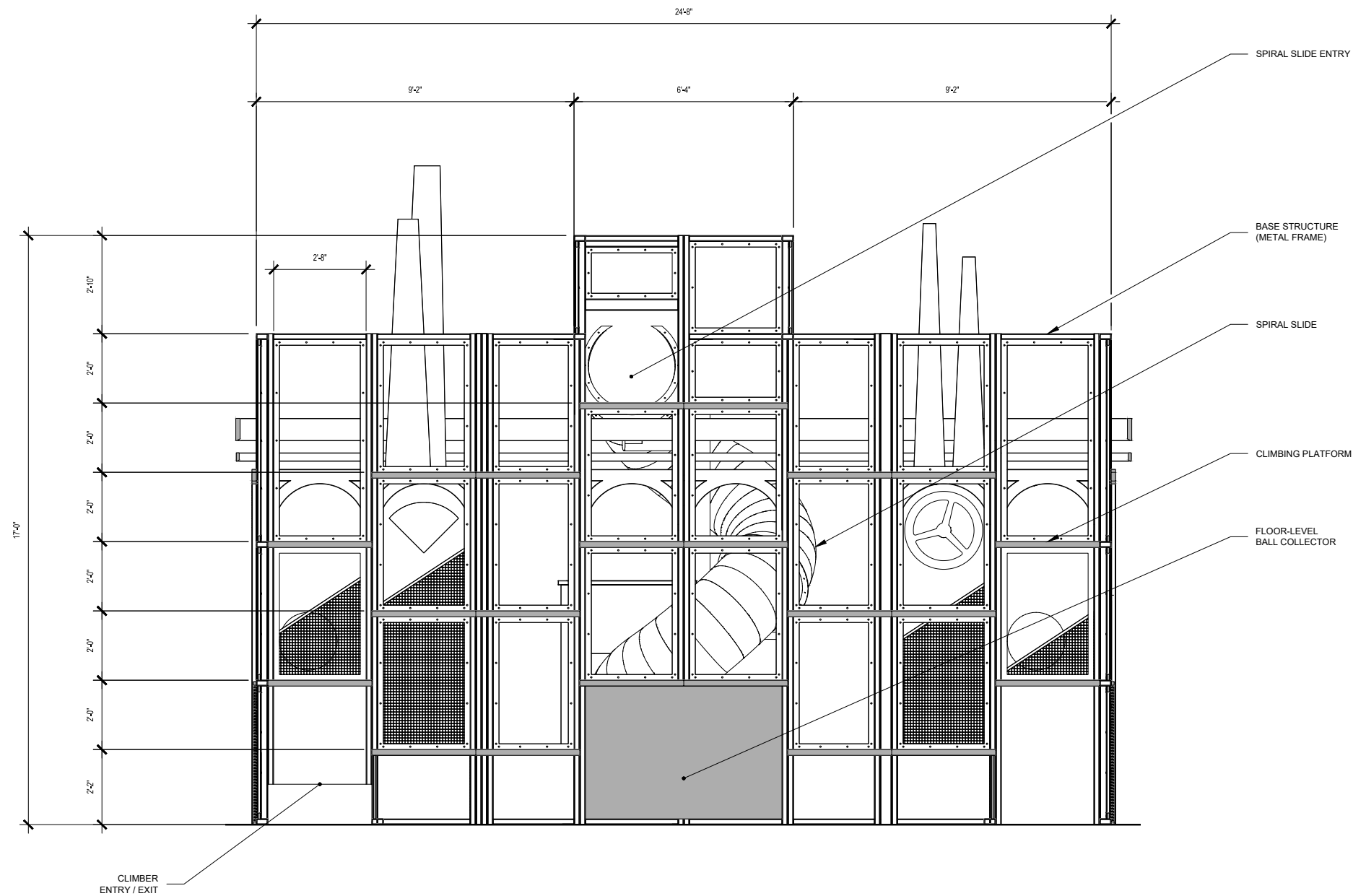
## SECTION - A

SCALE: 1/4" = 1'-0"

## FACTORY CLIMBER

### NOTES:

1. EASED EDGES. NO SHARP CORNERS.
2. UNLESS OTHERWISE SPECIFIED, CLIMBING STRUCTURE IS PAINTED METAL; THEMATIC CLADDING IS PAINTED WOOD.
3. FOR VISUAL CLARITY, THE FOLLOWING ELEMENTS ARE NOT SHOWN:
  - BALL RUNS FEEDING THE HOPPER FROM OTHER FACTORY INTERACTIVES
  - METAL MESH PANELS HOUSED WITHIN THE CONTAINMENT FRAMES
4. ALL VISIBLE HARDWARE TO FACE CLIMBER INTERIOR AS TO MAINTAIN UNOBSTRUCTED, CLEAN LINES ON CLIMBER EXTERIOR.
5. ALL HARDWARE AND/OR FABRICATED ELEMENTS ACCESSIBLE TO GUESTS WITHIN THE CLIMBER INTERIOR MUST ABIDE BY ASTM GUIDELINES FOR PROTRUSIONS, ETC. FOR SOFT CONTAINED PLAY.
6. CLIMBING STRUCTURE ATTACHES TO METAL PLATE INSTALLED WITHIN FACILITY FLOOR. ATTACHMENT DETAIL TBD BY FABRICATOR.
7. SEE GRAPHICS PACKAGE FOR SPECIFICS REGARDING INDIVIDUAL CLADDING ELEMENTS (DIMENSIONS, LAYER COMPOSITION, ETC.).
8. SEE PROVIDED 3D MODEL FOR ADDITIONAL DETAILS AND DIMENSIONS.



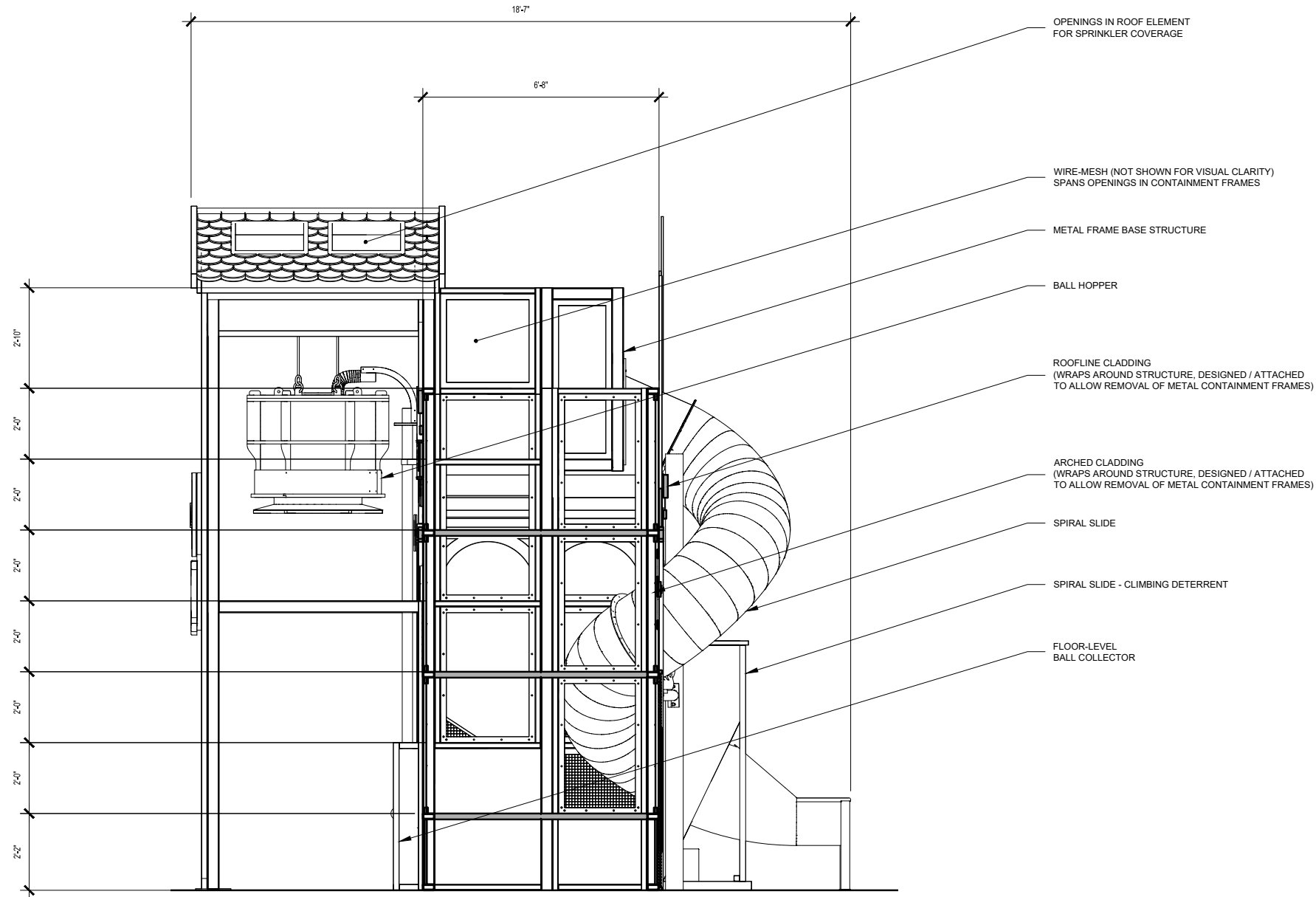
## SECTION - B

SCALE: 1/4" = 1'-0"

## FACTORY CLIMBER

### NOTES:

1. EASED EDGES. NO SHARP CORNERS.
2. UNLESS OTHERWISE SPECIFIED, CLIMBING STRUCTURE IS PAINTED METAL; THEMATIC CLADDING IS PAINTED WOOD.
3. FOR VISUAL CLARITY, THE FOLLOWING ELEMENTS ARE NOT SHOWN:
  - BALL RUNS FEEDING THE HOPPER FROM OTHER FACTORY INTERACTIVES
  - METAL MESH PANELS HOUSED WITHIN THE CONTAINMENT FRAMES
4. ALL VISIBLE HARDWARE TO FACE CLIMBER INTERIOR AS TO MAINTAIN UNOBSTRUCTED, CLEAN LINES ON CLIMBER EXTERIOR.
5. ALL HARDWARE AND/OR FABRICATED ELEMENTS ACCESSIBLE TO GUESTS WITHIN THE CLIMBER INTERIOR MUST ABIDE BY ASTM GUIDELINES FOR PROTRUSIONS, ETC. FOR SOFT CONTAINED PLAY.
6. CLIMBING STRUCTURE ATTACHES TO METAL PLATE INSTALLED WITHIN FACILITY FLOOR. ATTACHMENT DETAIL TBD BY FABRICATOR.
7. SEE GRAPHICS PACKAGE FOR SPECIFICS REGARDING INDIVIDUAL CLADDING ELEMENTS (DIMENSIONS, LAYER COMPOSITION, ETC.).
8. SEE PROVIDED 3D MODEL FOR ADDITIONAL DETAILS AND DIMENSIONS.



## SECTION - C

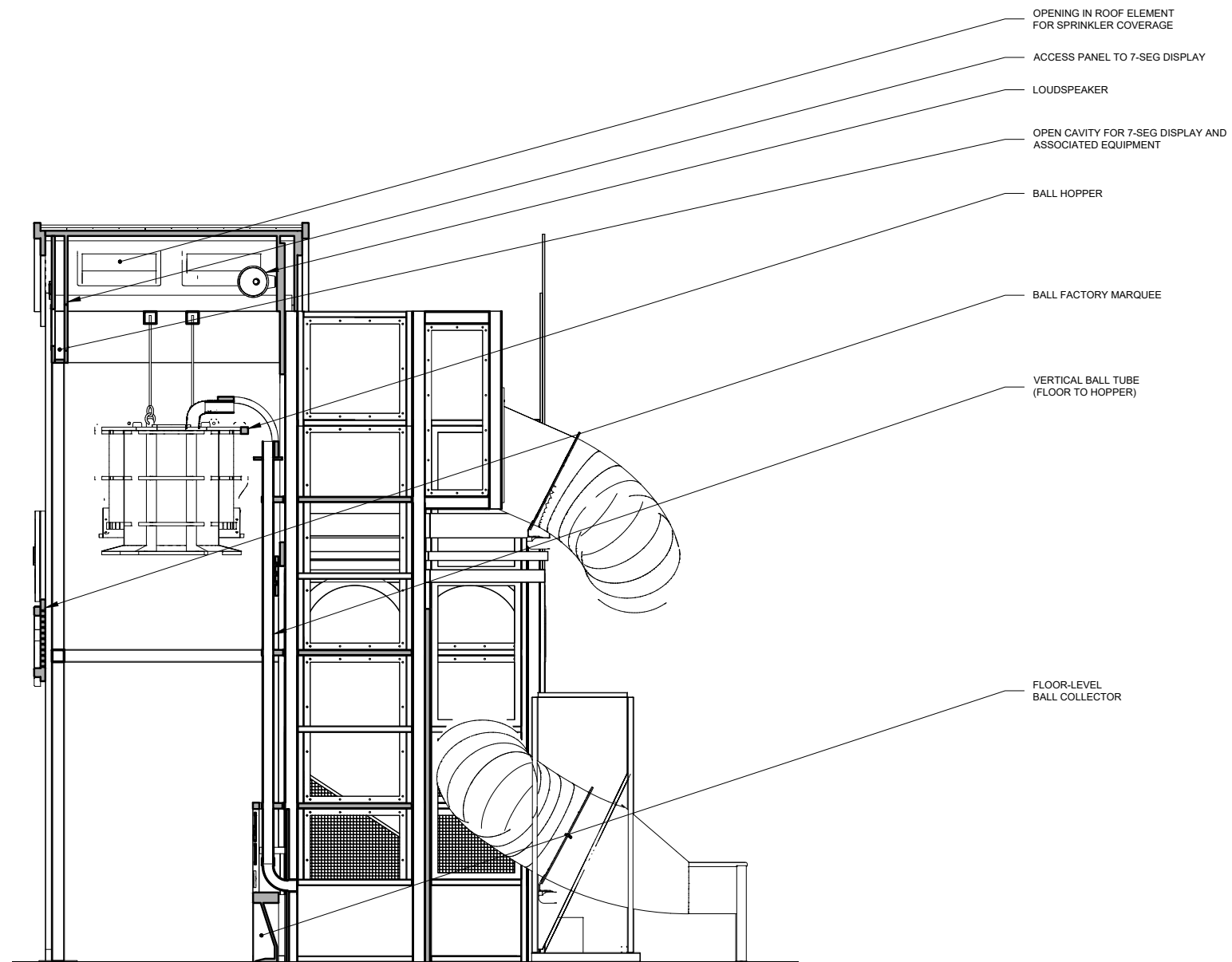
SCALE: 1/4" = 1'-0"

## FACTORY CLIMBER

### NOTES:

1. EASED EDGES. NO SHARP CORNERS.
2. UNLESS OTHERWISE SPECIFIED, CLIMBING STRUCTURE IS PAINTED METAL; THEMATIC CLADDING IS PAINTED WOOD.
3. FOR VISUAL CLARITY, THE FOLLOWING ELEMENTS ARE NOT SHOWN:
  - BALL RUNS FEEDING THE HOPPER FROM OTHER FACTORY INTERACTIVES
  - METAL MESH PANELS HOUSED WITHIN THE CONTAINMENT FRAMES
4. ALL VISIBLE HARDWARE TO FACE CLIMBER INTERIOR AS TO MAINTAIN UNOBSTRUCTED, CLEAN LINES ON CLIMBER EXTERIOR.
5. ALL HARDWARE AND/OR FABRICATED ELEMENTS ACCESSIBLE TO GUESTS WITHIN THE CLIMBER INTERIOR MUST ABIDE BY ASTM GUIDELINES FOR PROTRUSIONS, ETC. FOR SOFT CONTAINED PLAY.
6. CLIMBING STRUCTURE ATTACHES TO METAL PLATE INSTALLED WITHIN FACILITY FLOOR. ATTACHMENT DETAIL TBD BY FABRICATOR.
7. SEE GRAPHICS PACKAGE FOR SPECIFICS REGARDING INDIVIDUAL CLADDING ELEMENTS (DIMENSIONS, LAYER COMPOSITION, ETC.).
8. SEE PROVIDED 3D MODEL FOR ADDITIONAL DETAILS AND DIMENSIONS.





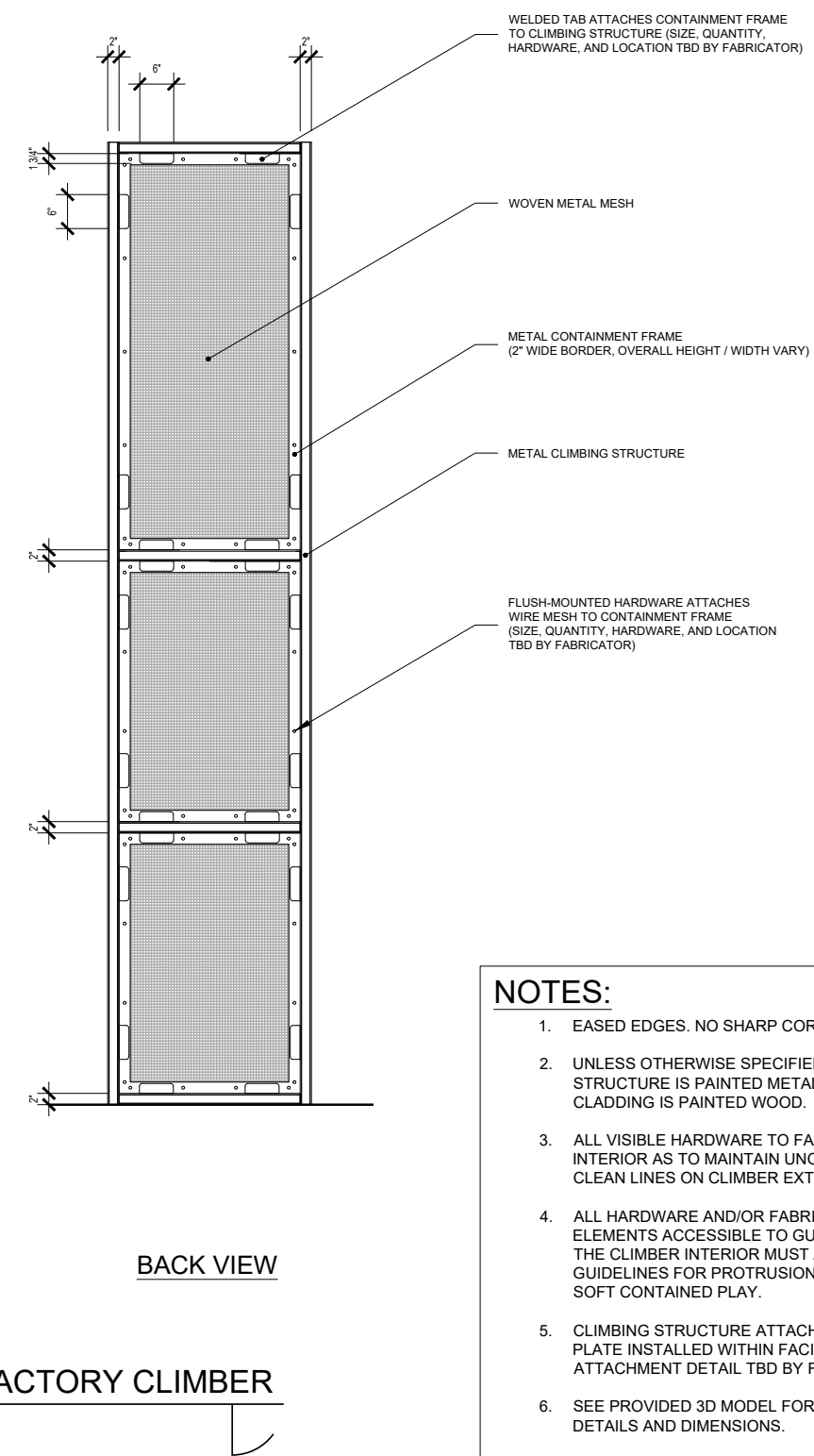
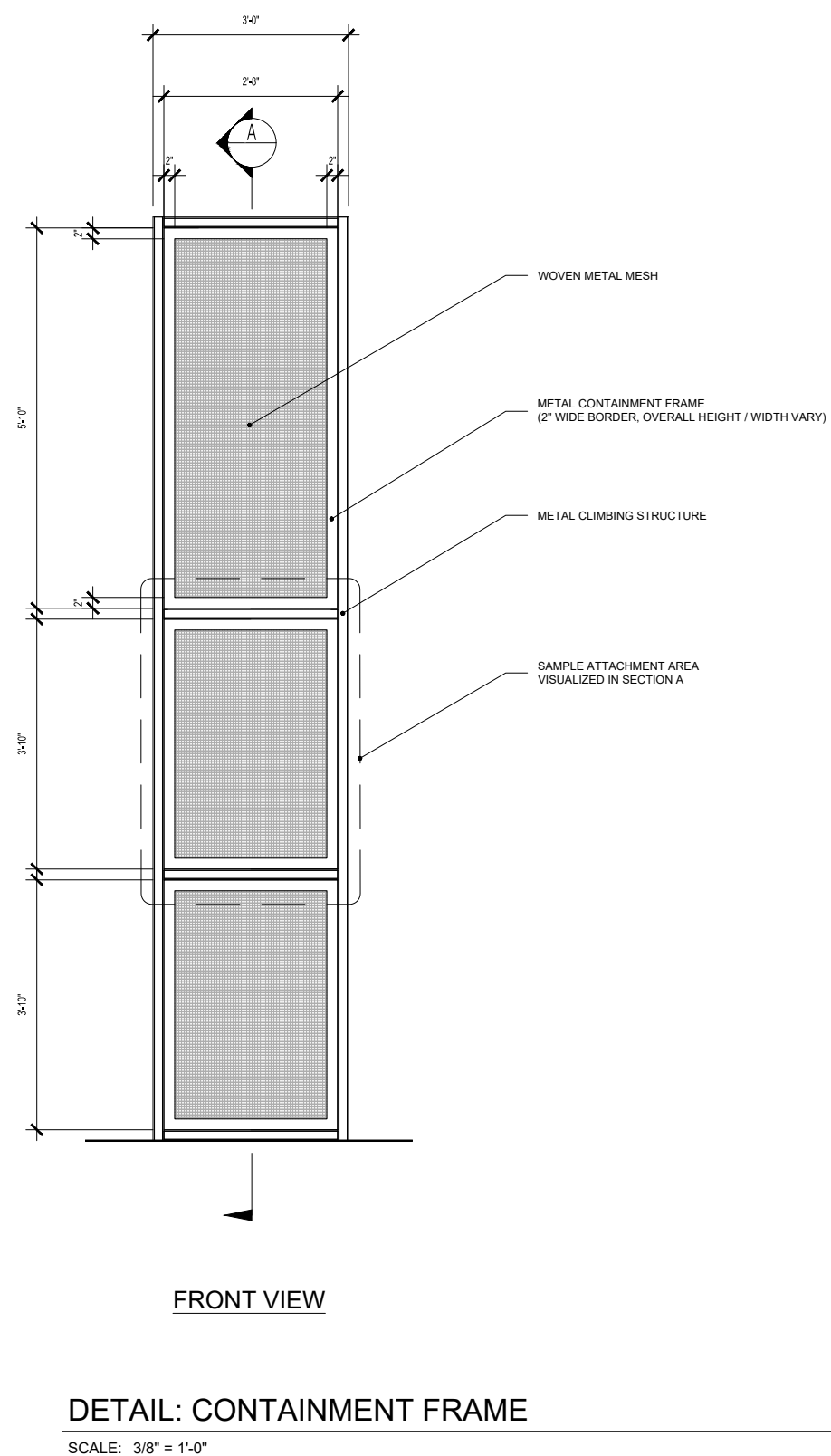
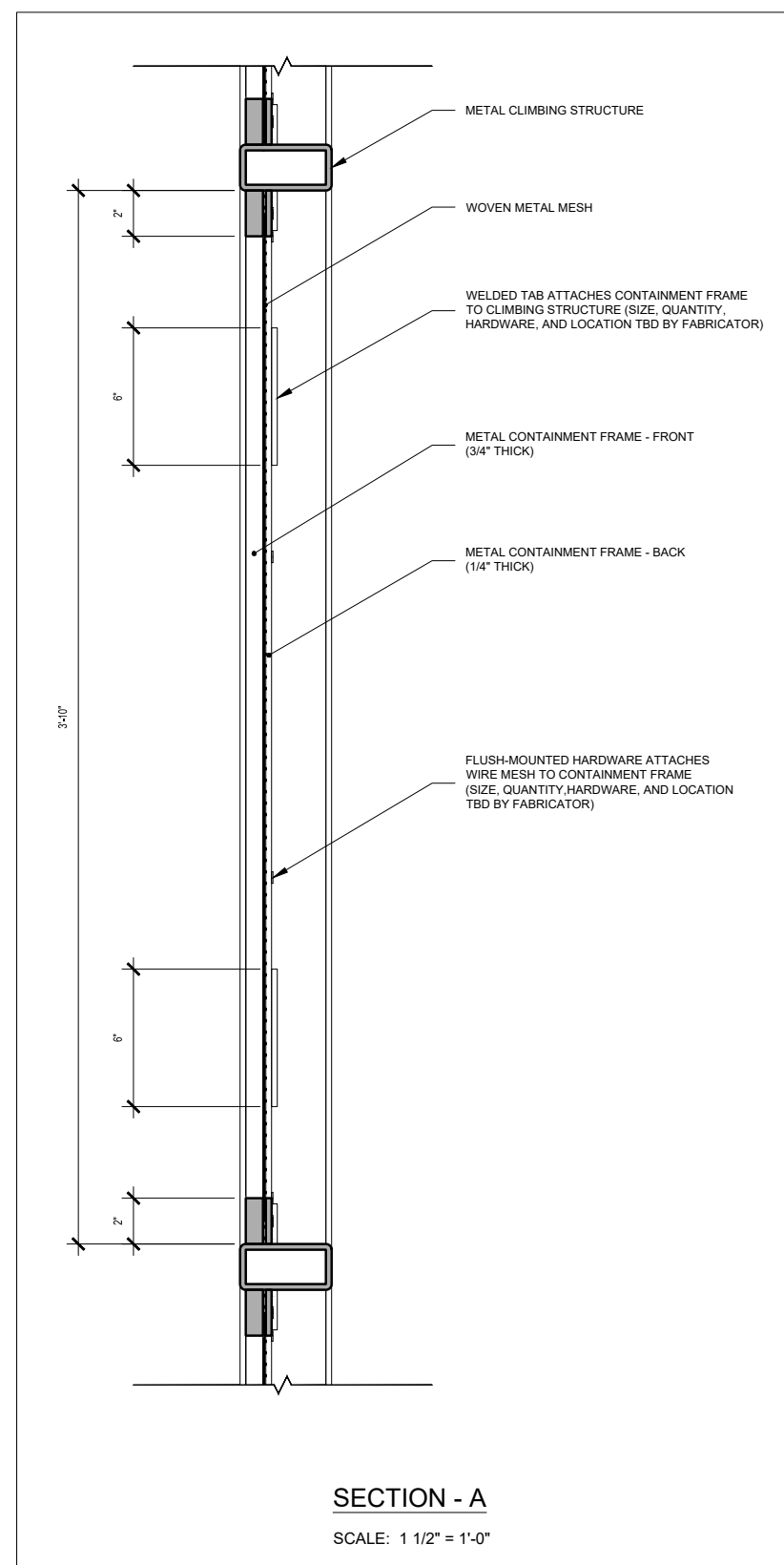
## SECTION - D

SCALE: 1/4" = 1'-0"

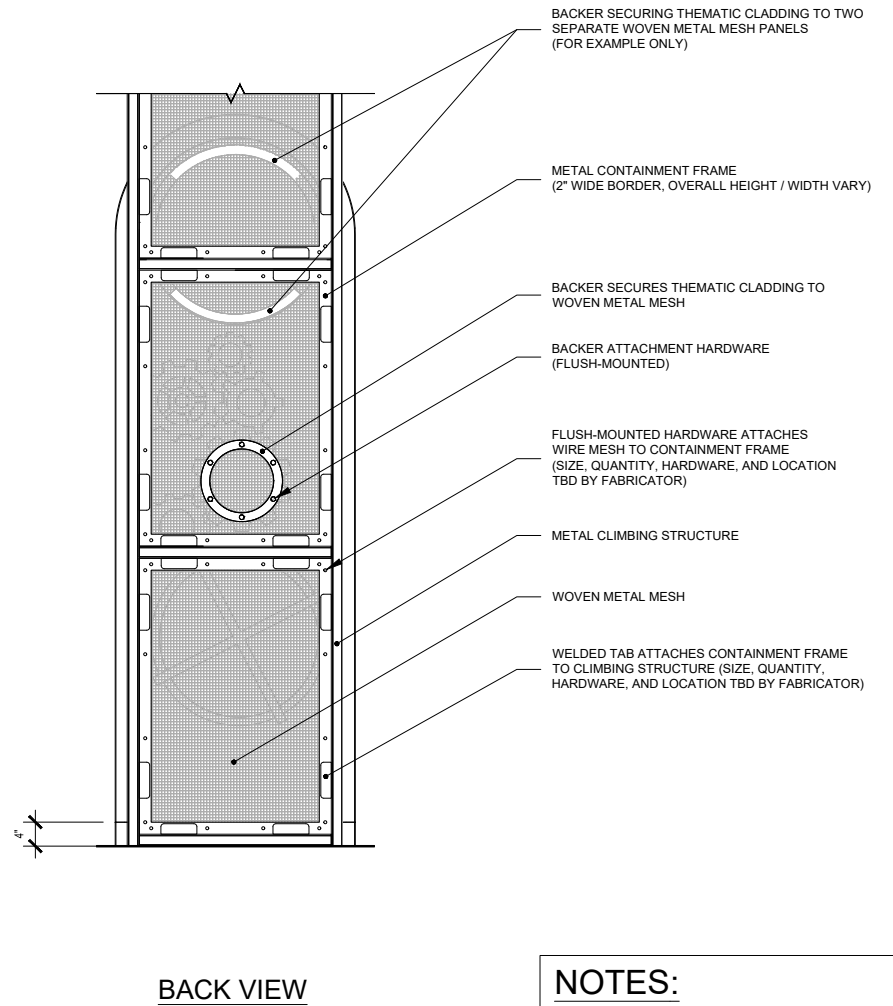
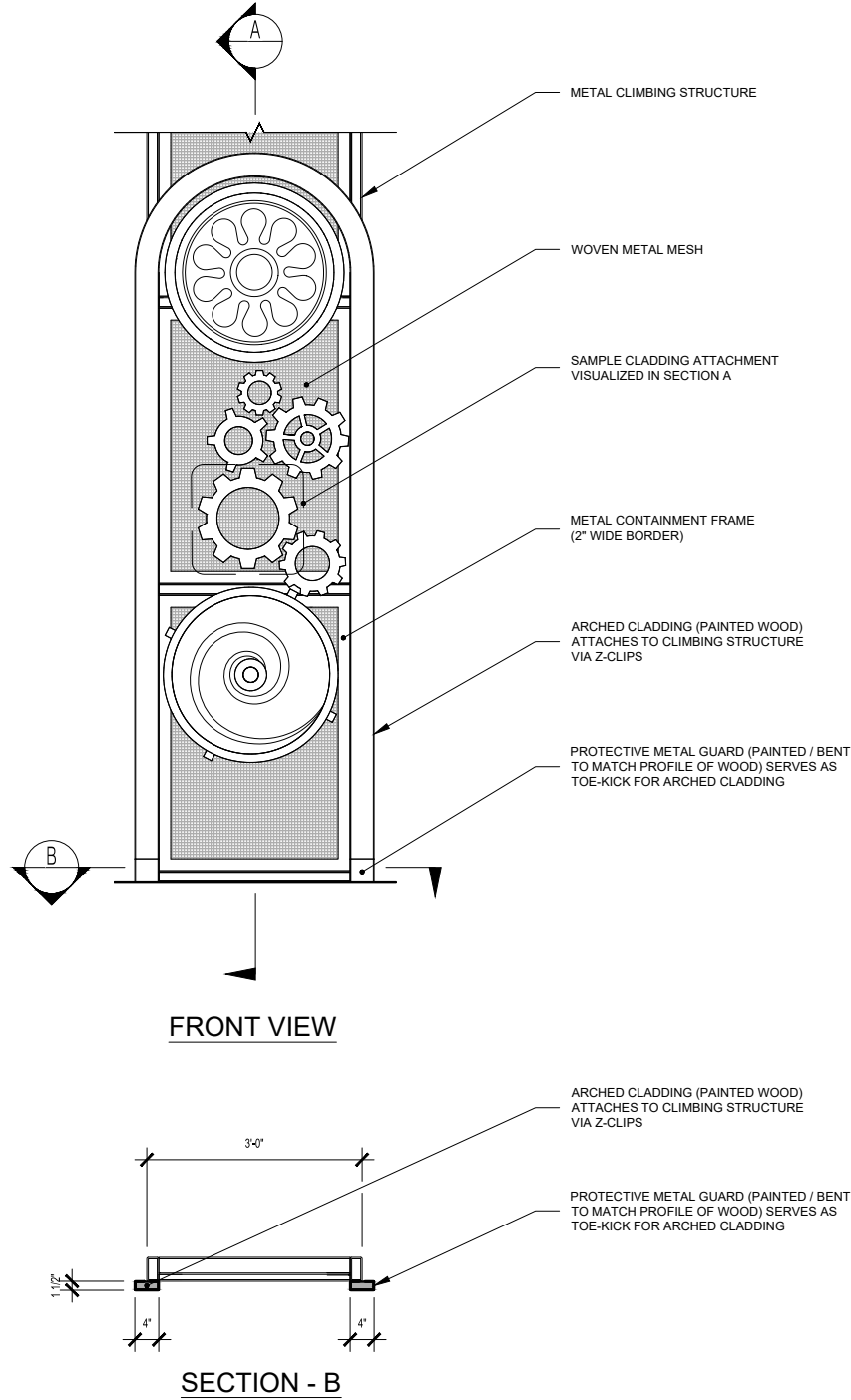
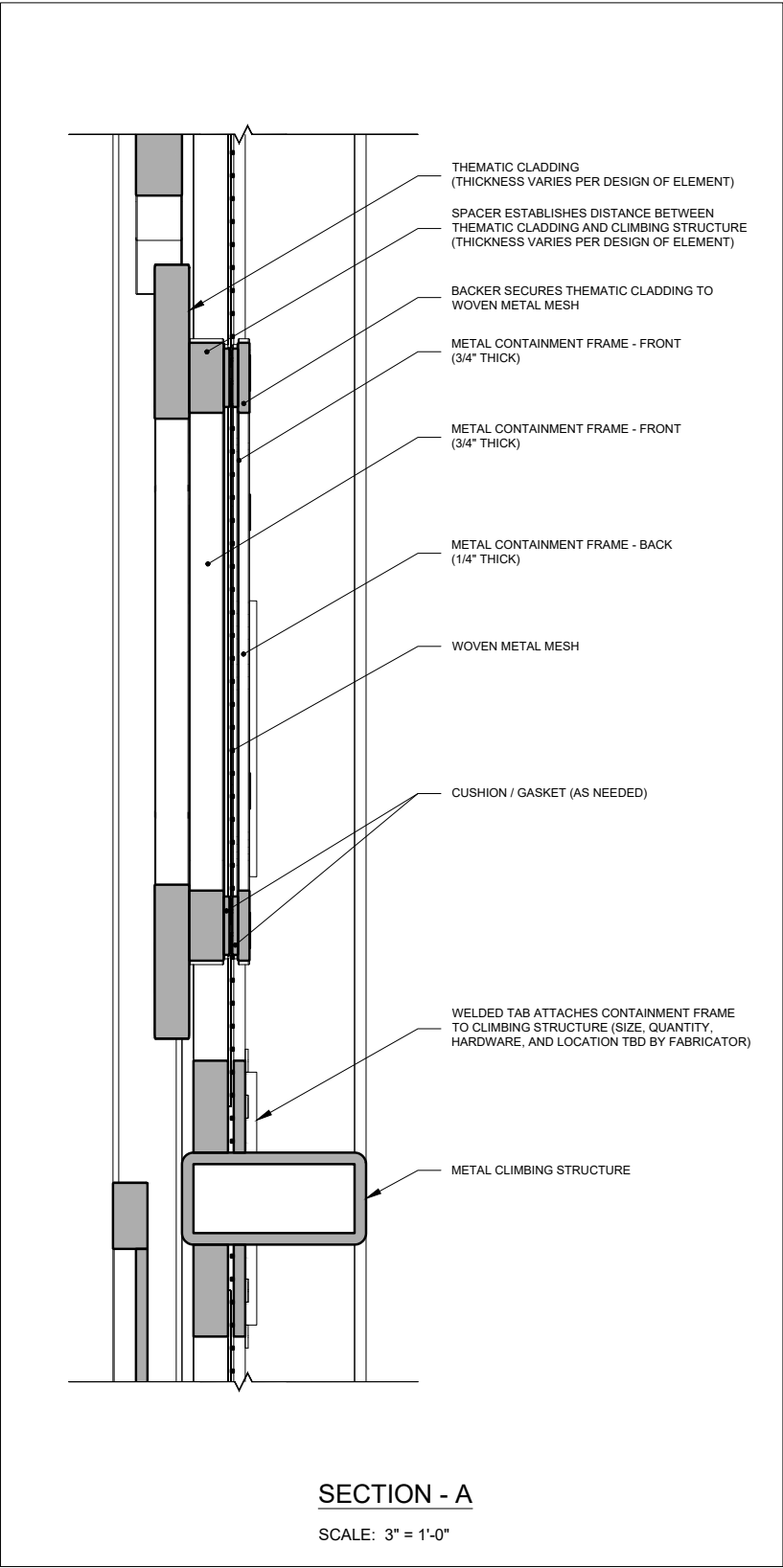
## FACTORY CLIMBER

### NOTES:

1. EASED EDGES. NO SHARP CORNERS.
2. UNLESS OTHERWISE SPECIFIED, CLIMBING STRUCTURE IS PAINTED METAL; THEMATIC CLADDING IS PAINTED WOOD.
3. FOR VISUAL CLARITY, THE FOLLOWING ELEMENTS ARE NOT SHOWN:
  - BALL RUNS FEEDING THE HOPPER FROM OTHER FACTORY INTERACTIVES
  - METAL MESH PANELS HOUSED WITHIN THE CONTAINMENT FRAMES
4. ALL VISIBLE HARDWARE TO FACE CLIMBER INTERIOR AS TO MAINTAIN UNOBSTRUCTED, CLEAN LINES ON CLIMBER EXTERIOR.
5. ALL HARDWARE AND/OR FABRICATED ELEMENTS ACCESSIBLE TO GUESTS WITHIN THE CLIMBER INTERIOR MUST ABIDE BY ASTM GUIDELINES FOR PROTRUSIONS, ETC. FOR SOFT CONTAINED PLAY.
6. CLIMBING STRUCTURE ATTACHES TO METAL PLATE INSTALLED WITHIN FACILITY FLOOR. ATTACHMENT DETAIL TBD BY FABRICATOR.
7. SEE GRAPHICS PACKAGE FOR SPECIFICS REGARDING INDIVIDUAL CLADDING ELEMENTS (DIMENSIONS, LAYER COMPOSITION, ETC.).
8. SEE PROVIDED 3D MODEL FOR ADDITIONAL DETAILS AND DIMENSIONS.



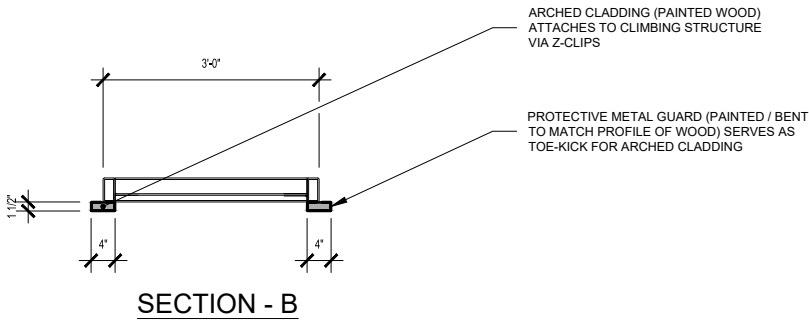
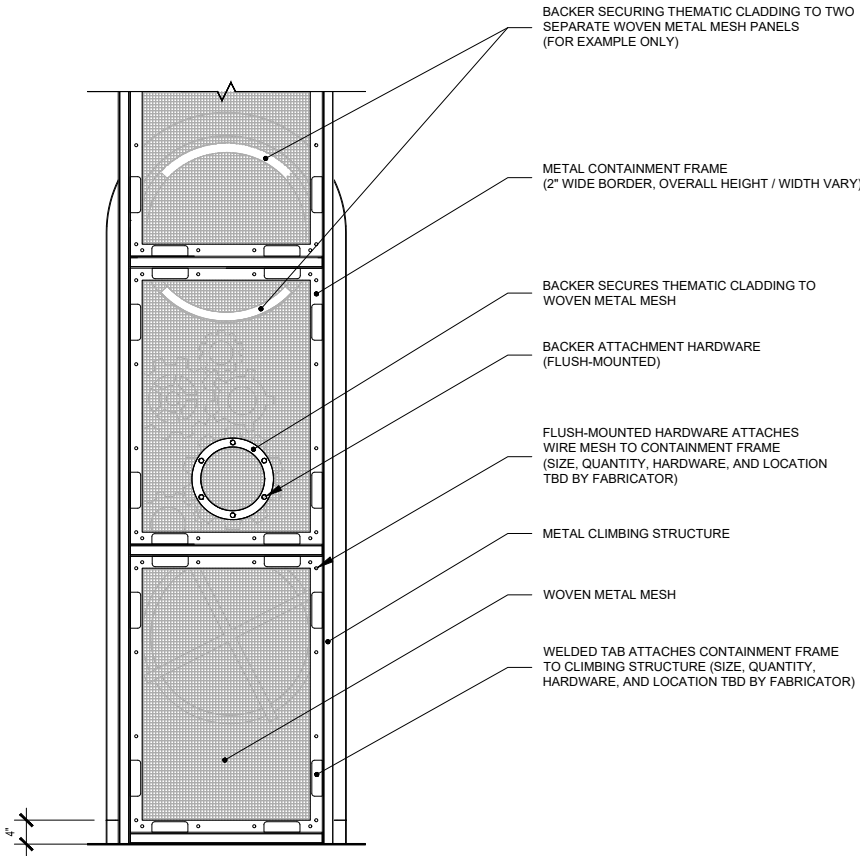
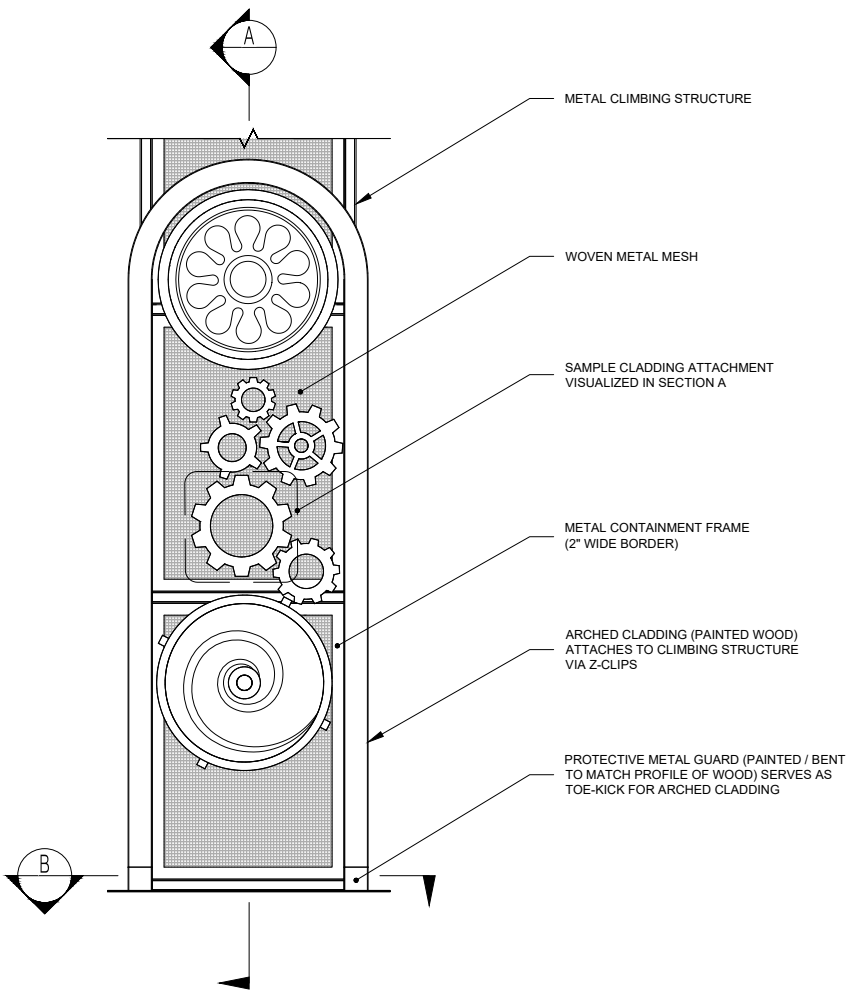
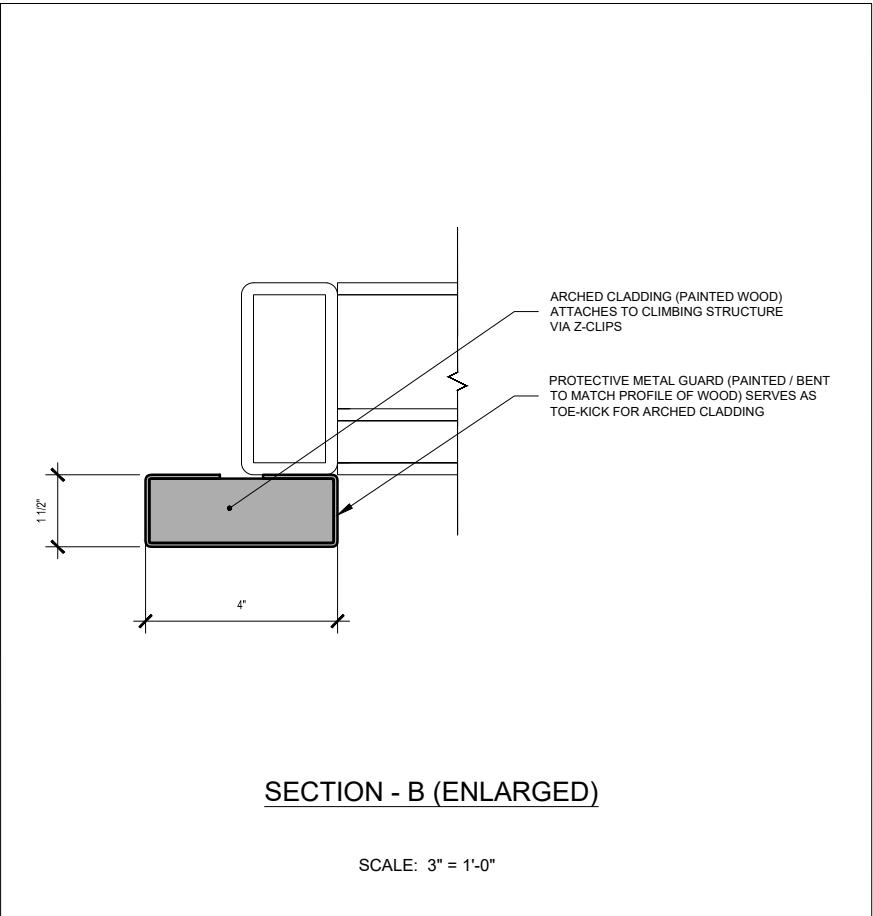
- # NOTES:
1. EASED EDGES. NO SHARP CORNERS.
  2. UNLESS OTHERWISE SPECIFIED, CLIMBING STRUCTURE IS PAINTED METAL; THEMATIC CLADDING IS PAINTED WOOD.
  3. ALL VISIBLE HARDWARE TO FACE CLIMBER INTERIOR AS TO MAINTAIN UNOBSTRUCTED, CLEAN LINES ON CLIMBER EXTERIOR.
  4. ALL HARDWARE AND/OR FABRICATED ELEMENTS ACCESSIBLE TO GUESTS WITHIN THE CLIMBER INTERIOR MUST ABIDE BY ASTM GUIDELINES FOR PROTRUSIONS, ETC. FOR SOFT CONTAINED PLAY.
  5. CLIMBING STRUCTURE ATTACHES TO METAL PLATE INSTALLED WITHIN FACILITY FLOOR. ATTACHMENT DETAIL TBD BY FABRICATOR.
  6. SEE PROVIDED 3D MODEL FOR ADDITIONAL DETAILS AND DIMENSIONS.



- NOTES:**
1. EASED EDGES. NO SHARP CORNERS.
  2. UNLESS OTHERWISE SPECIFIED, CLIMBING STRUCTURE IS PAINTED METAL; THEMATIC CLADDING IS PAINTED WOOD.
  3. ALL VISIBLE HARDWARE TO FACE CLIMBER INTERIOR AS TO MAINTAIN UNOBSTRUCTED, CLEAN LINES ON CLIMBER EXTERIOR.
  4. ALL HARDWARE AND/OR FABRICATED ELEMENTS ACCESSIBLE TO GUESTS WITHIN THE CLIMBER INTERIOR MUST ABIDE BY ASTM GUIDELINES FOR PROTRUSIONS, ETC. FOR SOFT CONTAINED PLAY.
  5. CLIMBING STRUCTURE ATTACHES TO METAL PLATE INSTALLED WITHIN FACILITY FLOOR. ATTACHMENT DETAIL TBD BY FABRICATOR.
  6. SEE GRAPHICS PACKAGE FOR SPECIFICS REGARDING INDIVIDUAL CLADDING ELEMENTS (DIMENSIONS, LAYER COMPOSITION, ETC.).
  7. SEE PROVIDED 3D MODEL FOR ADDITIONAL DETAILS AND DIMENSIONS.

**DETAIL: CLADDING ATTACHMENT**  
SCALE: 3/8" = 1'-0"

**FACTORY CLIMBER**

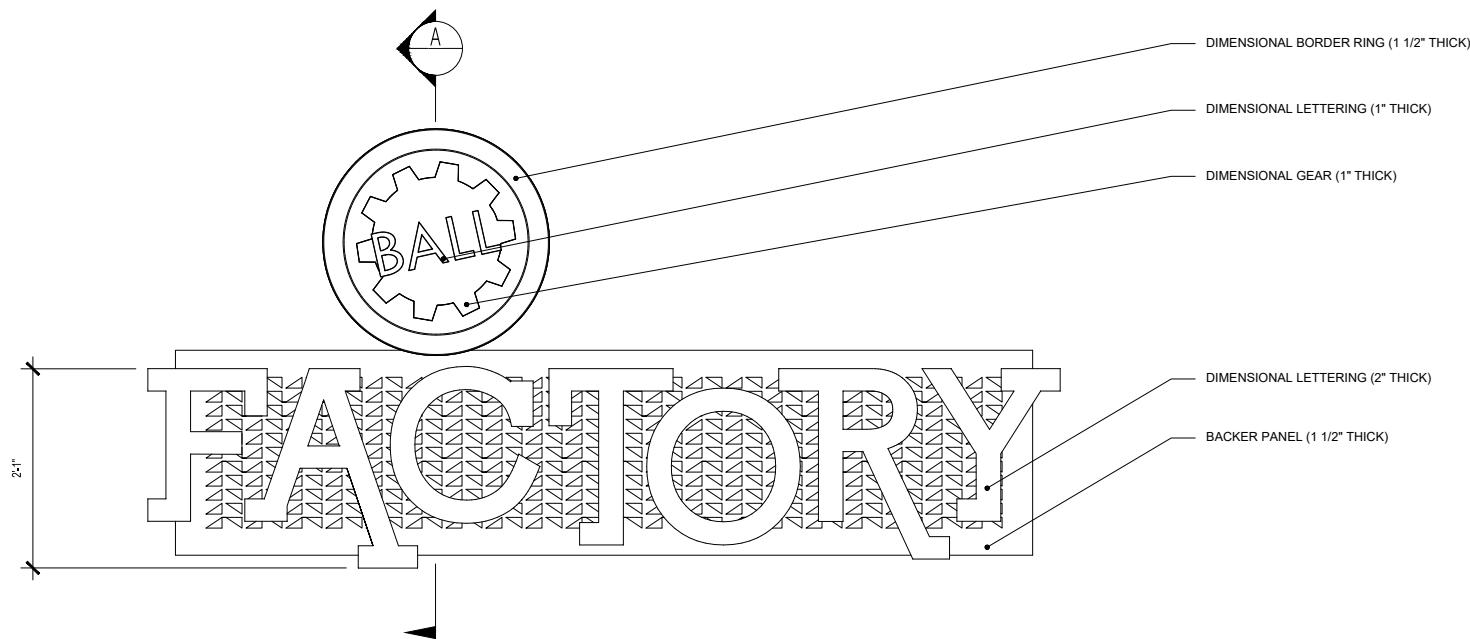


DETAIL: ARCHED CLADDING GUARD

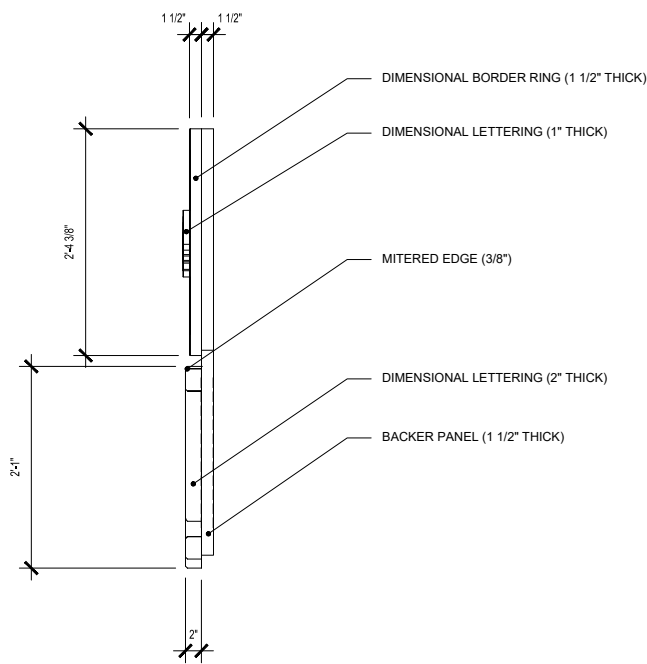
SCALE: 3/8" = 1'-0"

FACTORY CLIMBER

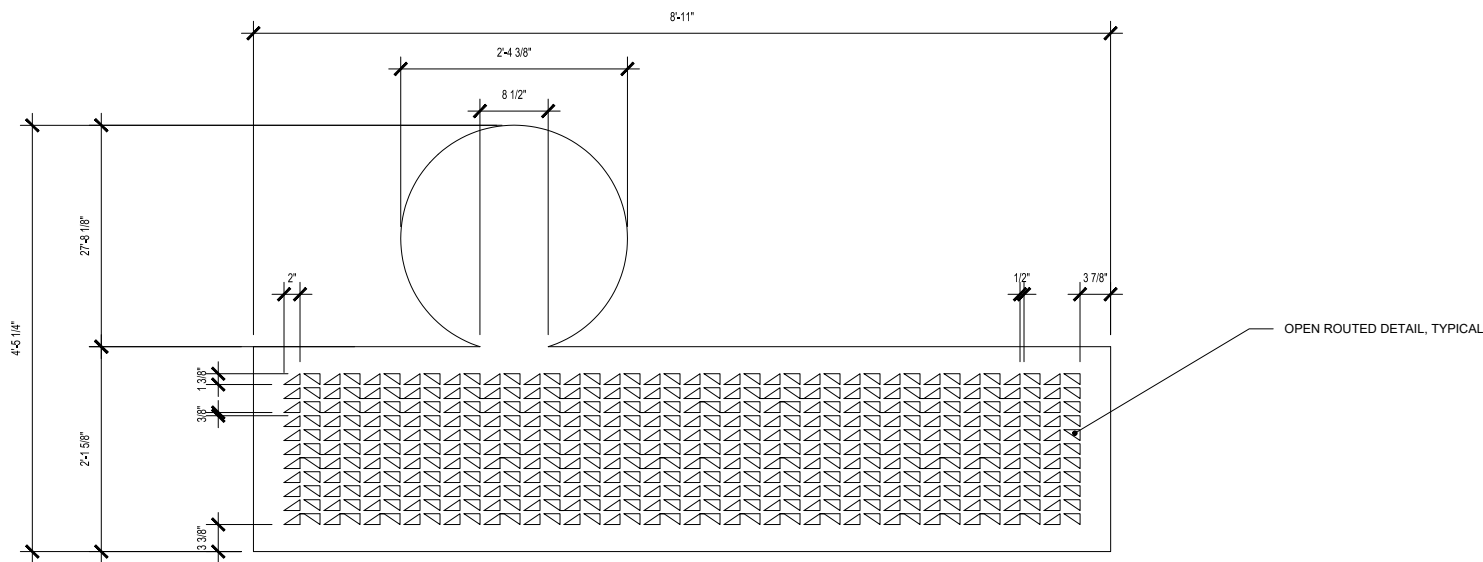
- NOTES:
- EASED EDGES. NO SHARP CORNERS.
  - UNLESS OTHERWISE SPECIFIED, CLIMBING STRUCTURE IS PAINTED METAL; THEMATIC CLADDING IS PAINTED WOOD.
  - ALL VISIBLE HARDWARE TO FACE CLIMBER INTERIOR AS TO MAINTAIN UNOBSTRUCTED, CLEAN LINES ON CLIMBER EXTERIOR.
  - ALL HARDWARE AND/OR FABRICATED ELEMENTS ACCESSIBLE TO GUESTS WITHIN THE CLIMBER INTERIOR MUST ABIDE BY ASTM GUIDELINES FOR PROTRUSIONS, ETC. FOR SOFT CONTAINED PLAY.
  - CLIMBING STRUCTURE ATTACHES TO METAL PLATE INSTALLED WITHIN FACILITY FLOOR. ATTACHMENT DETAIL TBD BY FABRICATOR.
  - SEE GRAPHICS PACKAGE FOR SPECIFICS REGARDING INDIVIDUAL CLADDING ELEMENTS (DIMENSIONS, LAYER COMPOSITION, ETC.).
  - SEE PROVIDED 3D MODEL FOR ADDITIONAL DETAILS AND DIMENSIONS.



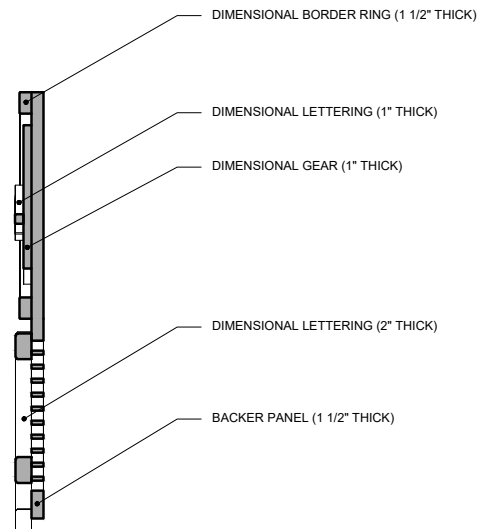
FRONT VIEW



RIGHT VIEW



FRONT VIEW (BACKER ONLY)



SECTION - A

NOTES:

- EASED EDGES. NO SHARP CORNERS.
- UNLESS OTHERWISE SPECIFIED, CLIMBING STRUCTURE IS PAINTED METAL; THEMATIC CLADDING IS PAINTED WOOD.
- FOR VISUAL CLARITY, THE FOLLOWING ELEMENTS ARE NOT SHOWN:
  - BALL RUNS FEEDING THE HOPPER FROM OTHER FACTORY INTERACTIVES
  - METAL MESH PANELS HOUSED WITHIN THE CONTAINMENT FRAMES
- ALL VISIBLE HARDWARE TO FACE CLIMBER INTERIOR AS TO MAINTAIN UNOBSTRUCTED, CLEAN LINES ON CLIMBER EXTERIOR.
- ALL HARDWARE AND/OR FABRICATED ELEMENTS ACCESSIBLE TO GUESTS WITHIN THE CLIMBER INTERIOR MUST ABIDE BY ASTM GUIDELINES FOR PROTRUSIONS, ETC. FOR SOFT CONTAINED PLAY.
- CLIMBING STRUCTURE ATTACHES TO METAL PLATE INSTALLED WITHIN FACILITY FLOOR. ATTACHMENT DETAIL TBD BY FABRICATOR.
- SEE GRAPHICS PACKAGE FOR SPECIFICS REGARDING INDIVIDUAL CLADDING ELEMENTS (DIMENSIONS, LAYER COMPOSITION, ETC.).
- SEE PROVIDED 3D MODEL FOR ADDITIONAL DETAILS AND DIMENSIONS.

MARQUEE

SCALE: 1/2" = 1'-0"

FACTORY CLIMBER